



Developing Excellence in Practice 2020-2021

GEORGE SPENCER TEACHING SCHOOL ALLIANCE

The aim of the programme is to develop a teacher who can reflect on teaching with the tools to enable and raise levels of engagement in learning, through providing consistently excellent lessons; an innovative teacher who is willing to take risks.

The programme comprises 6 sessions over 3 terms. Within this, there are linked practical tasks back in your school including applying what you learn and observation in the host school. Participants focus on a range of aspects of teaching and learning such as challenge, engagement, assessment, differentiation, questioning and planning.

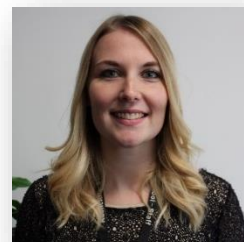
What will it deliver?

- Introduce and consolidate new knowledge and skills, and focus on what constitutes excellent practice in teaching and learning.
- Provide in-depth coaching to deepen teachers' understanding of excellent classroom practice. Participants improve through facilitated practice activities as structured opportunities to reflect on teaching approaches and their quality and impact.
- Provide an opportunity for teachers to see excellent teaching in a host school, be observed in their own school by specialists and to discuss how practice might be further enhanced.
- Develop a higher level of understanding of teaching and improve learning for students while providing the techniques to 'coach' colleagues and raise performance.

Who is this programme for?

Candidates must:

- be a high quality practitioner with at least three years' teaching experience.
- be a highly respected, inspiring professional who demonstrates high order interpersonal skills.
- have a commitment both to continuing their professional development and that of other staff.



Lauren Carter Cook
Programme
Assistant Principal at
Rushcliffe School leading on
staff development and an
SLE for the Spencer
Academies Trust

Session 1 – 4pm – 5.30 pm Excellence in classroom practice: Progress

Session 2 – 4pm – 5.30 pm: Excellence in classroom practice: Assessment for learning; Stretch, Challenge and Support

Session 3 - Specialist Subject: What does exceptional practice look like in your subject specialism?

Session 4 - Specialist Subject excellent practice observations: In host school and coaching discussion

Session 5 – Specialist Subject excellent practice observation: In own school and coaching discussion. Developing excellent classroom practice

Session 6 – 4 – 5.30pm Excellence in classroom practice: Developing the mind-set and skills of an effective and resilient learner

Dates to be confirmed for the Autumn Term

Venue

Rushcliffe School, Boundary Road, West Bridgford, Nottingham, NG2 7BW

Cost

£100 for George Spencer TSA Members and SAT Schools

£150 for non-members

To book a place, please [CLICK HERE](#)

