

27 August 2020

Dear Fairfield Families,

## Reminder of key information...

---

I hope you have all had a good break over the summer holidays. We have been busy at Fairfield whilst you have been away and are looking forward to you seeing our new playground equipment, new EYFS and KS1 toilet area and two new Y6 classrooms!

We are really looking forward to **welcoming all of our children back to school next Wednesday 2<sup>nd</sup> September**. As promised in our final newsletter sent in July, here is a reminder of key information for the term ahead.

- Our enhanced **cleaning** arrangements and **hand washing/sanitising** hygiene routines will continue during Autumn Term.
- Children will be kept within **year group bubbles**, where possible, during the school day. Year group bubbles will enable us to offer our **broad and balanced SHINE Curriculum** and manage the practical logistics within and around school.
- With their year group bubbles, older children will be encouraged to keep their distance within groups and will be seated side by side and facing forwards, rather than face to face. We accept and know our younger children will not be able to maintain **social distancing** and it is acceptable for them not to distance within their group.
- **Classroom resources** may be shared within the class bubbles, these will be cleaned regularly, along with all frequently touched surfaces.
- **Home-school reading books/school library books** that are returned to school, will be removed for 72 hours, before going back into circulation.
- **Movement around the school site** will be kept to a minimum, break and lunch times will be staggered and assemblies will take place virtually for Autumn Term.
- Outdoor **playground equipment** will be frequently cleaned.
- We look forward to all children wearing **full school uniform**.
- **School bags, lunch boxes, coats, books and mobile phones (Y4/Y5/Y6 only)** are allowed.  
*N.B. Mobile phones will be handed in daily to class teachers and stored away during the school day.*
- **PE kits/bags** are allowed, please send these with the children on their first day back/every Monday. These will be returned home on Fridays to be washed.

- If you pay for **school dinners** for your child(ren) in KS2 (Y3-6) during Autumn Term; these will be delivered as packed lunches to their classrooms. We will aim for at least one school dinner per week to be a 'hot packed lunch'. **Universal Free School Meals** for EYFS and KS1 (Y1&Y2) will continue to be provided in the dining hall.
- Please may we request that all children bringing in **packed lunches**, ensure that a 'reusable freeze board' is alongside their lunch, to keep this cool until lunchtime. Thank you.
- **Staggered start and finish times** will be in place to help keep year group bubbles apart when arriving and leaving school.

**8:30am & 3:00pm – Y3 & Y4**

**8:45am & 3:15pm – Y1/2/5**

**9am & 3:30pm – EYFS & Y6**

**If you are collecting / have children in several year groups please bring/collect them all at the earliest time from their individual class locations identified on the map.** If you arrange for your child to be collected by another person, please ensure that the school office is informed.

Please note that the **points of entry from Queen Elizabeth Park at the start and end of the school day will swap.** This is to enable children in Y4, Y5 and Y6 who are walking home unaccompanied, to be able to walk a route avoiding the need to cross the Queen Elizabeth Car Park.

Please follow the one-way systems around school, where possible.

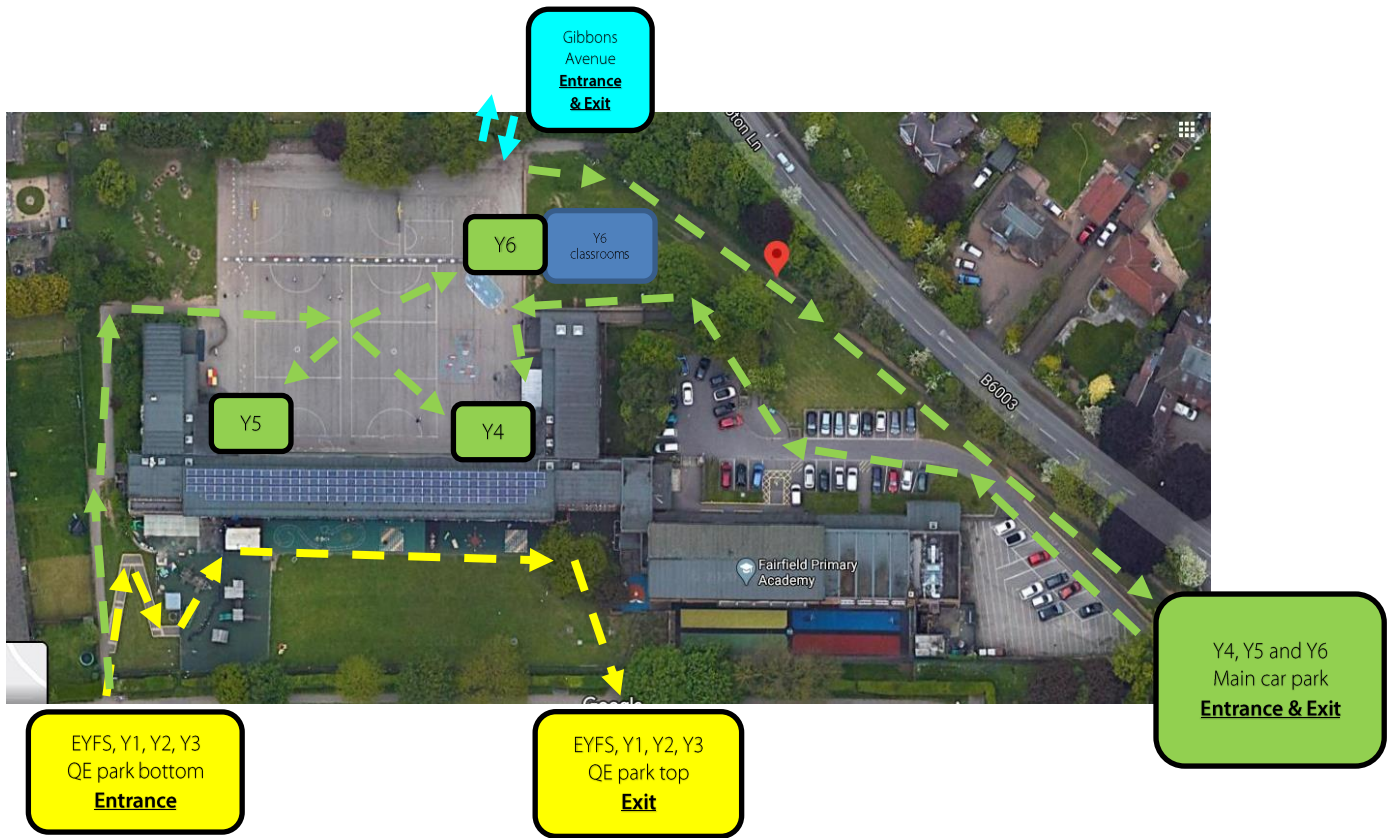
**Children in Y4, Y5 and Y6, with written parental permission, will be allowed to leave the school site unaccompanied.**

Users of pushchairs/wheelchairs will be able to use routes that avoid steps.

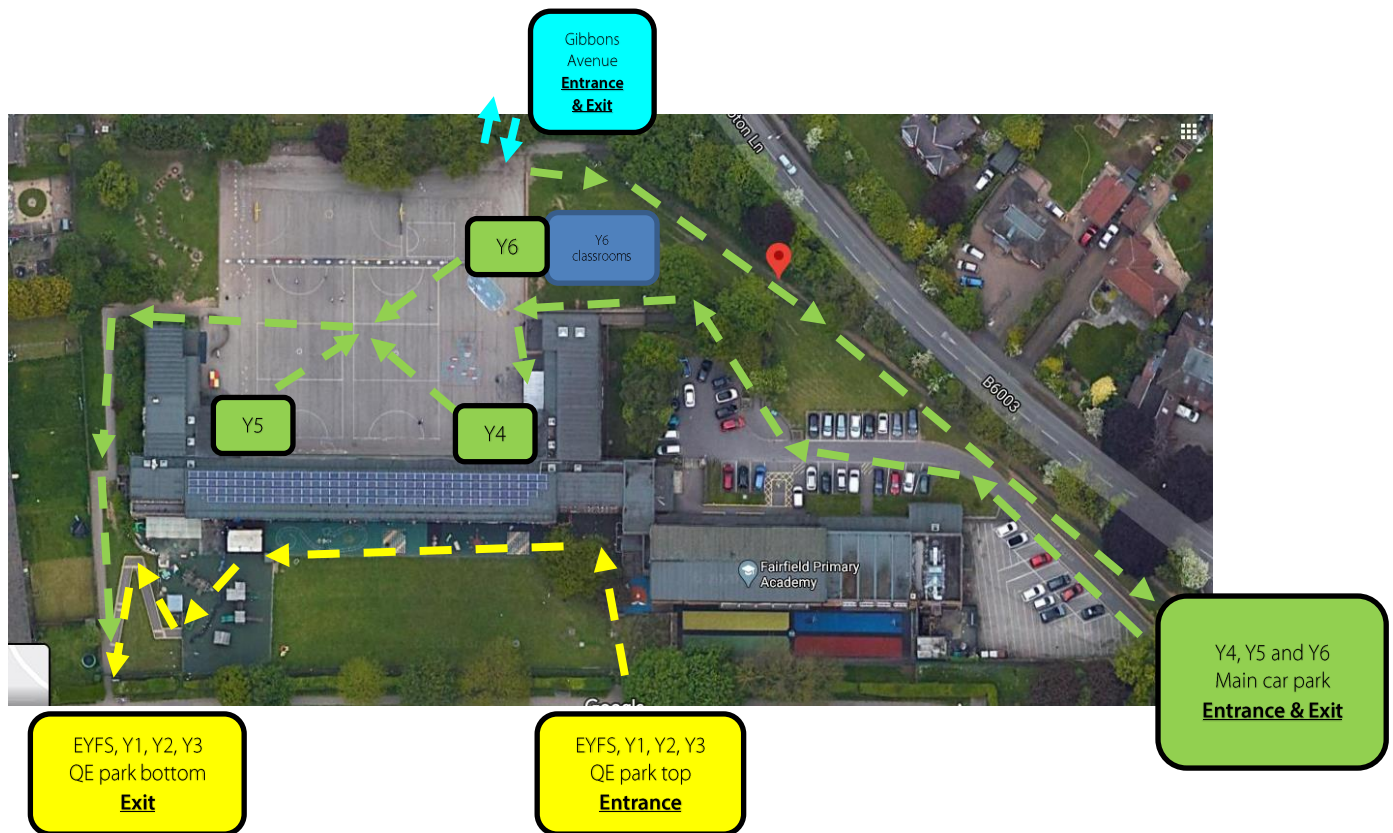
If you require any assistance, please do not hesitate to get in touch.

N.B. Access to EYFS, Y1/2/3 will only be from the Queen Elizabeth Park Entrance.

# Morning Routes into School



# Afternoon Routes out of School



## Extended Schools Provision

- o Extended Schools provision **will not be in place from the start of September.** Once all children are back in school and routines are in place, we will then introduce Extended Schools provision, only if it is safe to do so and we are able to do this whilst complying with the Government guidance and expectations.
- o **In Autumn Term, once we are able to confirm a date for re-opening, we will provide more information.**

## Menu week commencing 31<sup>st</sup> August 2020

<b>Monday</b>	Bank Holiday	
<b>Tuesday</b>	Inset Day	
<b>Wednesday</b>	Minced beef pasta bolognese, garden peas, garlic slice	Chocolate Shirley biscuit
<b>Thursday</b>	Roast turkey, broccoli, creamed potatoes, stuffing	Iced chocolate shortcake
<b>Friday</b>	Fish cake, baked beans, chips	Fruit muffin

## Activities for week commencing 31<sup>st</sup> August 2020

<b>Monday</b>	Bank Holiday
<b>Tuesday</b>	Inset Day
<b>Wednesday</b>	Back to school (whole school). EYFS SHINE visit half day
<b>Thursday</b>	RE Day in class activities. EYFS SHINE visit half day
<b>Friday</b>	EYFS SHINE visit half day and lunch

### Calendar - Autumn 1

**11/09** Roald Dahl Celebration – bring your favourite book  
**14/09** PTFA Committee meeting (Zoom) 3:45pm  
**16/09** Phonics workshop for parents 10:30am/5pm (Zoom)  
**17/09** SEND surgery 9am (Zoom)  
**18/09** Jeans for Genes Day Non uniform £1 optional  
**22-29/09** Scholastic Book Fair  
**22/09** Academy Class photos  
**22/09** Pupil learning meetings 3:30pm-6:30pm (Zoom)  
**23/09** Pupil learning meetings 3:30pm-6:30pm (Zoom)

**29/09** EYFS New Starters 2021 – Open Event (1:30pm - Zoom)  
**08/10** Dress up for Science Week  
**09/10** World Mental Health Day – wear yellow  
**14/10** Year 6 Big Family Quiz Night 5:30-6:30pm (Zoom)  
**15/10** EYFS New Starters 2021 – Open Event (9:15am - Zoom)  
**16/10** INSET Day  
**19/10 – 30/10** October half term  
**02/11** – Back to school

Along with this letter is an overview of schools dates for the year ahead. We hope you find these useful to have in advance.

I am sure that it will take a few days for new routines to be established. Thank you in advance for your patience, whilst we work to ensure that these are running smoothly. Members of staff will be around the school site to support and to answer any questions.

Kindest regards,

Shamara Sadler, Principal