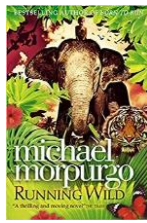




FAIRFIELD
SPENCER ACADEMY

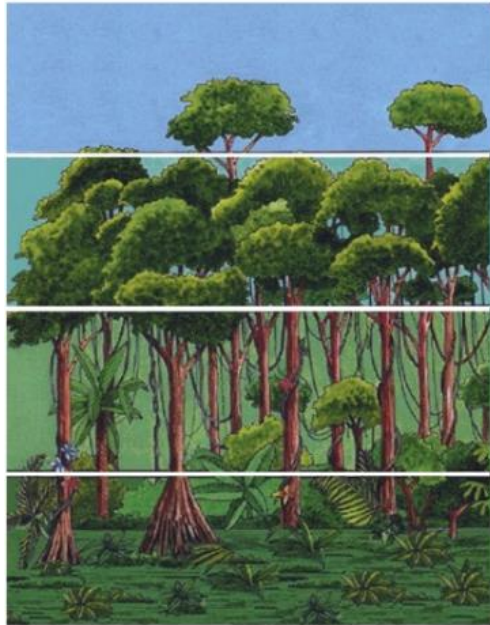
Year 5
Autumn 1
Welcome to the
jungle



Global Theme
Global awareness
and sustainability



Layers of the Rainforest



EMERGENT LAYER

The tallest trees are the emergent layer. There is a lot of sunlight there. Animals found there are eagles, monkeys, bats and butterflies.

CANOPY LAYER

This layer is full of leaves and branches. Many animals live in this area since there is a lot of food. Animals that live there are snakes, toucans and treefrogs.

UNDERSTORY LAYER

Very little sunshine reaches this area so the plants have to grow larger leaves get sunlight. Many animals live here including jaguars, red-eyed tree frogs and leopards. A lot of bugs live here.

FOREST FLOOR

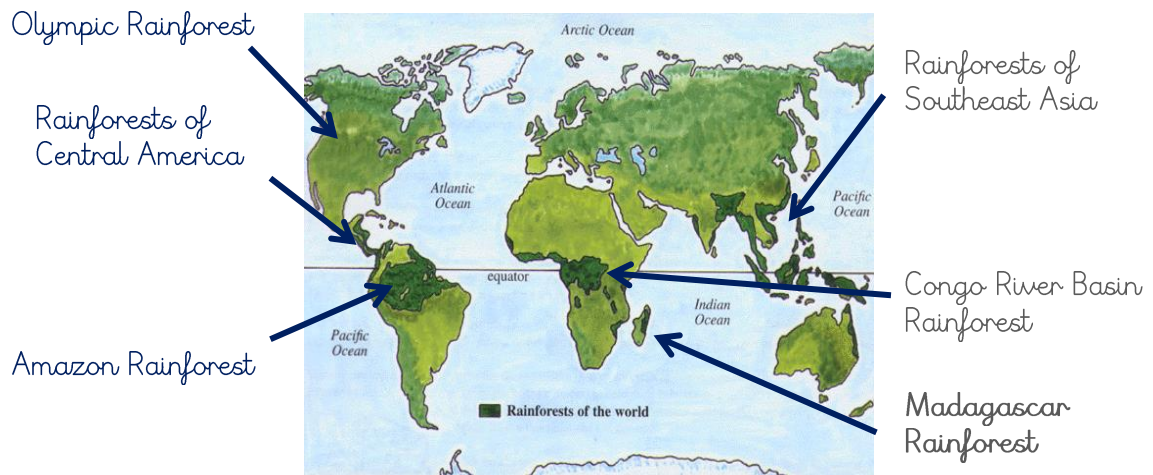
It's very dark down here. Almost no plants grow in this area. Giant anteaters live in this layer.

Vocabulary

Word	Definition	Icon
Sustainable	Able to be maintained at a certain rate or level.	
Deforestation	The action of clearing a wide area of trees.	
Deciduous	A plant which loses its leaves, usually in Autumn.	
Biome	A biome is a large region of Earth that has a certain climate and certain types of living things.	

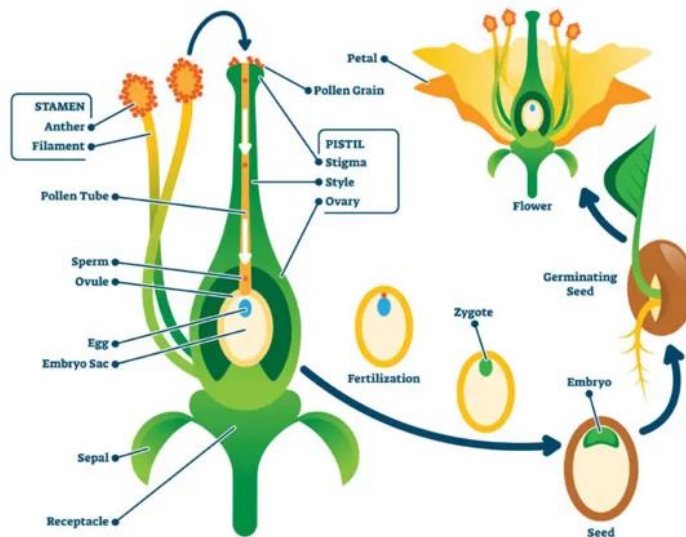
Geography

Major tropical rainforests in the world



Science

FLOWER REPRODUCTION



French

Bonjour (Hello)

Bonjour (Hello)

Comment ca va? (How are you?)

Ca va tres bien merci. (I'm very good thank you)

Bon a entendre (Good to hear)

Learning Destination

Write a persuasive letter to change the world.

