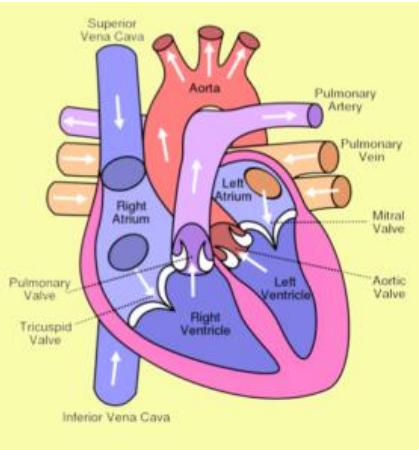


The value of our heart

Our physical heart

Our emotional heart



The heart is a powerful muscle that is situated between your lungs, protected by the ribcage.

Pumps blood to the lungs to get oxygen.

Pumps the oxygenated blood to the rest of the body.


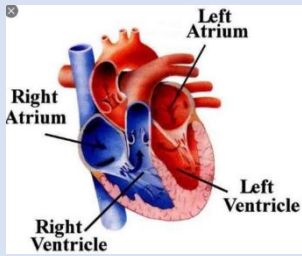



Helps us to make decisions.

Controls our feelings/emotions.

SHINE and be kind.



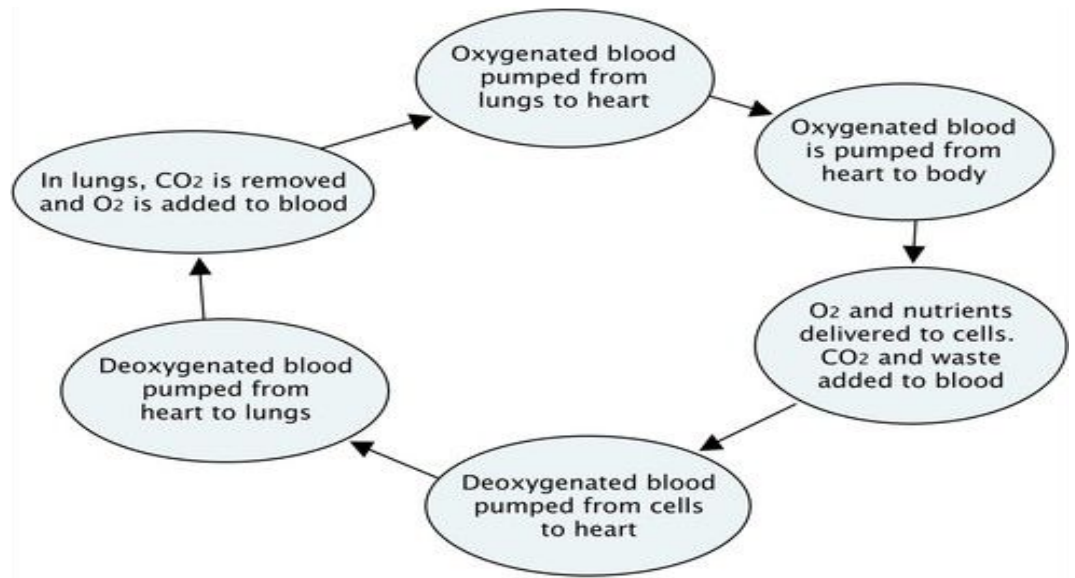
Vocabulary

Word	Definition	Picture
1. Aorta	The largest artery in the body. It carries oxygenated blood away from the left ventricle to the body.	
2. Atrium (right/left)	Upper chambers of the heart through which blood enters the ventricles.	
3. Ventricle (right/left)	Muscular chambers that pump blood out of the heart to the lungs or the rest of the body.	
4. Vena cava	A large vein that carries deoxygenated blood from the body back to the heart.	
5. Empathy: cognitive, emotional, compassionate	To understand and share the feelings of others.	
6. Benevolent	Well-meaning and kind. Desiring to help others.	

Science

The circulatory system is made up of three parts:

- The heart
- Blood vessels
- Blood



Geography

It is so important to be kind to the world around us and help climate change- this is linked to our emotional heart.

Because of climate change:

- The Earth has warmed by 1°C since the Industrial Revolution.
- Our weather is more extreme and unpredictable.
- Habitats are being destroyed.
- Parts of the Earth have become wetter.

WHAT IS A BIOME?

A biome is a natural area of plants and animals. The world is divided into lots of different biomes and they are all different depending on their climate.



Art

Drawing

Impressionistic:

- Doesn't try to create a reflection of real life.
- Creates an 'impression' of what the image looks like to them.
- Captures movement and life as if it were happening before our eyes.

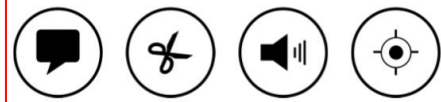


Realistic:

- Sometimes known as naturalism.
- An attempt to represent something truthfully.
- Avoids artistic flare.



Sounds and syllables



- 1) Use spelling voice
- 2) Snip into syllables
- 3) Say and write sounds
- 4) Target tricky spellings

relcogInise
relcolmmend
relconIcile
refleIrence
relfelrenIdum

Learning Destination

To raise awareness and money for a school defibrillator.

